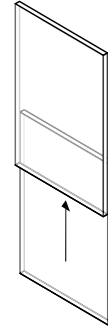


3001 RANGE GUILLOTINE

PRODUCT INFORMATION

The Vitrocsa 3001 range offers sliding window surfaces of up to 6 m² with 26-mm-thick double glazing. The first Vitrocsa 3001 window was developed at the start of the 1990s. With the experience we now have, we can guarantee that this system presents no hidden defects.

The roller mechanism and sealing system work perfectly, provided that the window has been assembled in line with good industry practices. The mechanisms in the top part (pulleys) must be 80 cm from the top of the frame



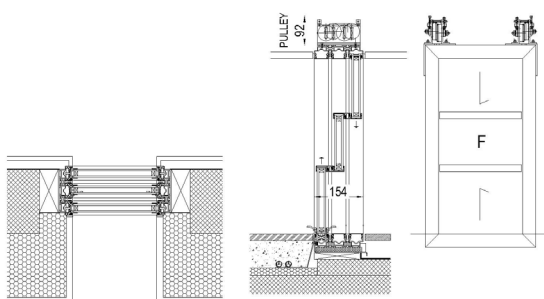
RAILS + FRAMES

- Embedded and concealed in the floor, wall and ceiling
- Frame just 99.5 mm wide for a birail (mono: 45 mm + 9.5 mm seal)
- Saline treatment specially adapted for coastal projects

VERTICAL CONNECTION

- 18.5 mm
- Reinforced for very windy locations or installation at high altitudes

MAIN CROSS SECTIONS



CLOSURE MECHANISM

- 1-point closure button (029, 035, 055)
- Alarms

GLAZING

- 26 mm
- Panels up to 6 m²

OPTIONS

- Guillotine (up to 6 m²)
- In the 3001, only the system with two glass panes which counterbalance one another is possible.
- Top part mechanism: 92 mm

VITROCSA Headquarters
Orchidées Constructions SA
Rue de la Gare 8
2024 Saint-Aubin-Sauges
Switzerland

T +41 24 436 22 02
F +41 24 436 22 02
www.vitrocsa.com
info@vitrocsa.com

V I T R O C S A

THE MINIMALIST WINDOW

3001 RANGE GUILLOTINE

CONFIGURATION DIAGRAMS

The weight of the pane must always be counterbalanced.
Therefore, there must always be two panes which counterbalance each other

two counterbalanced panes;
birail-trirail; manual

